



# SACRED HEART PRIMARY SCHOOL PROSPECTUS



# **SACRED HEART PRIMARY SCHOOL**



**Telephone: 028 713 45552**

**E-mail: [info@sacredheart.derry.ni.sch.uk](mailto:info@sacredheart.derry.ni.sch.uk)**

**Website: [www.sacredheartps.com](http://www.sacredheartps.com)**

**Facebook: Sacred Heart PS Derry**



# *A Message from the Principal*

*Dear Parents/Guardians,*

*As Principal of Sacred Heart Primary School, I am delighted to extend a warm and heartfelt welcome to you. Choosing the right school for your child is one of the most important decisions you will make, and we hope this prospectus gives you a true sense of the caring, vibrant, and inclusive environment we offer.*

*Our school is a place where everyone is embraced and valued, reflecting our commitment to inclusivity and the belief that every individual is a cherished member of our community. At Sacred Heart, every child and every family matters. We place the needs of our pupils at the heart of everything we do, ensuring that each child feels respected, supported, and encouraged to thrive.*

*Our school motto, Live, Love, Learn, Laugh, encapsulates the essence of our educational philosophy. We strive to create an environment where each child can reach their full potential and experience the joy of learning. We believe in nurturing not only academic excellence but also the personal growth and well-being of every student.*

*Sacred Heart is more than a school; we are one family. We pride ourselves on being a warm, welcoming, and friendly community where every child has a voice—and their voice matters. We foster a positive approach to learning and behaviour, ensuring that each student feels safe, happy, and motivated in their educational journey.*

*We value our strong partnership with parents and carers, knowing that working together is essential for the success and happiness of our pupils. We also maintain close links with the wider community, building relationships that enrich the lives of our children and their families.*

*On behalf of myself and the Board of Governors, I hope you enjoy finding out more about our school and the opportunities we provide. Please explore our prospectus and, if you have any questions or would like to visit us, do not hesitate to get in touch. We look forward to welcoming you and your child into our Sacred Heart family.*

*Yours sincerely,  
Mrs Louise Cunning*





# WHO WE ARE

## OUR VISION



We are a Catholic school devoted to nurturing faith, embracing inclusivity, and empowering each child to reach their fullest potential. Our mission is to foster a nurturing and supportive environment where the child is at the heart of everything we do. We strive to maintain effective links with our local and wider community and value the role that they play in helping us to succeed.

## OUR MOTTO



## OUR AIMS

### LIVE

- Foster a safe and healthy environment for physical, emotional, and spiritual growth.
- Encourage perseverance and high self-esteem.
- Value the voice of those in our school community.
- Live our faith through kindness, charity, and concern for others.
- Strive for continuous improvement and excellence.

### LOVE

- Nurture a sense of faith, worship and prayer.
- Build a community of mutual respect and empathy.
- Foster strong and supportive relationships with all.
- Cultivate a sense of belonging and inclusivity.
- Promote acts of kindness and compassion daily.

### LEARN

- Inspire a lifelong passion for learning through engaging and challenging educational experiences.
- Provide a diverse and inclusive curriculum for all.
- Develop inquisitive, imaginative, and creative minds.
- Foster a growth mindset, where mistakes are seen as opportunities for learning and improvement.
- Encourage all pupils to reach their full potential.

### LAUGH

- Nurture an enjoyment, love and enthusiasm for learning.
- Celebrate all achievements, recognizing the unique contributions of all pupils to school and the wider community.
- Foster a supportive environment where laughter, joy, and the freedom to express yourself are integral to learning and personal growth.
- Promote fun activities, events, and traditions that unite the wider school community and create lasting memories.





# Admissions Criteria

The following criteria will be applied in the order set down by the board of governors at Sacred Heart Primary School in selecting children for admission to Year 1. In the event of over-subscription in any one of the criteria, taken in order as set down, pupils will be selected on the basis of proximity of their parent/guardian home to school as measured by shortest walking distance by public thorough fare using Google Maps.

1. Children who have reached compulsory school age.
2. Children who reside in the Parish of Glendermott. (Parish Map can be viewed in school office)
3. Children who reside in other areas.

Sub Criteria that will be applied in the event of over-subscription:

1. Children who have a child of the family presently enrolled in the school.
2. Children transferring from Trench Road Nursery School and Jack & Jill Community Playgroup.
3. Children whose have a child of the family or parents/guardians are prior pupils of the school.
4. Children whose parents/guardians are presently a permanent member of the school teaching/ancillary/auxiliary staff or management.



# Accommodation and Facilities

Sacred Heart Primary School offers a modern, well-equipped learning environment designed to meet the needs of every child. Our school comprises of 18 bright and spacious classrooms, each furnished with interactive whiteboards to support engaging and dynamic teaching.

For our youngest learners, we provide large play areas and dedicated rooms for Year 1 and Year 2, ensuring a safe and stimulating start to their school journey. Technology plays a key role in learning at Sacred Heart, with a fully furnished ICT suite, a specialist iPad room, and access to digital resources across the curriculum.

Our facilities include a large assembly hall for whole-school events, a small sensory room and a larger sensory circuit room to support pupils' emotional and sensory needs, as well as an intervention room and a designated space for our school counsellor to provide tailored support.

Outdoor learning is central to our ethos. We have two very large and spacious playgrounds, an outdoor classroom, and a dedicated outdoor learning and play area, which is also used for our Forest School programme, giving children opportunities to explore, play, and learn beyond the classroom walls.

Our canteen, located adjacent to the main school building, provides a welcoming space for healthy meals and social interaction.

At Sacred Heart, we pride ourselves on creating an environment that is safe, inclusive, and inspiring—where every child can thrive academically, socially, and emotionally.







# Our Primary Curriculum

At Sacred Heart Primary School, every child has access to the Northern Ireland Curriculum, which provides a broad and balanced foundation for learning. The term Curriculum refers to all the learning experiences your child will encounter during their time with us—both inside and outside the classroom.

Our curriculum is carefully planned and delivered to meet the individual needs of every child, ensuring that each pupil is supported and challenged to reach their full potential.

The Primary Curriculum is organised into six key areas of learning:

- Language and Literacy
- Mathematics and Numeracy
- The World Around Us
- The Arts
- Physical Development and Movement
- Personal Development and Mutual Understanding

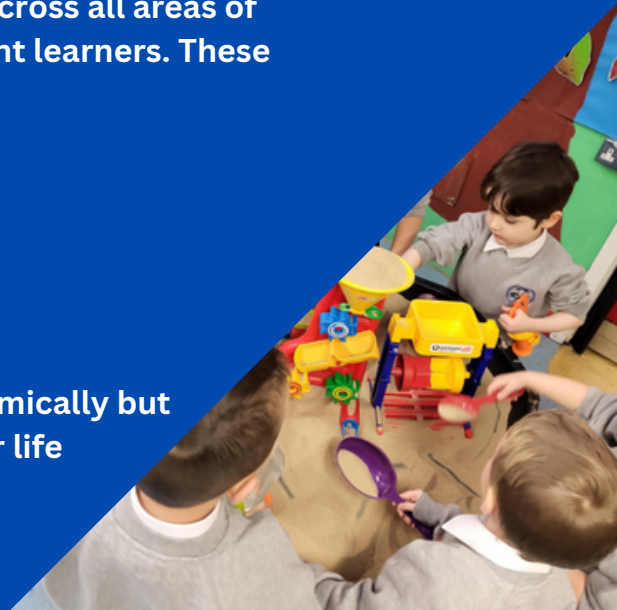
In addition, we place a strong emphasis on developing Cross-Curricular Skills, which include:

- Communication
- Using Mathematics
- Using Information and Communications Technology (ICT)

We also promote Thinking Skills and Personal Capabilities across all areas of learning, helping children to become confident, independent learners. These include:

- Thinking, Problem-Solving and Decision-Making
- Self-Management
- Working with Others
- Managing Information
- Being Creative

Our approach ensures that children not only achieve academically but also develop the skills, resilience, and creativity needed for life beyond the classroom.





# Outdoor Learning at Sacred Heart

Here at Sacred Heart, we believe that learning should extend beyond the classroom walls. Our Outdoor Learning Programme, including Forest School, provides pupils with rich opportunities to explore, discover, and connect with the natural environment.

We are proud to have three fully trained Forest School teachers, ensuring that outdoor learning is delivered safely and effectively. Children take part in hands-on activities that promote curiosity, resilience, and teamwork, all while developing a deep appreciation for nature.

To make outdoor learning accessible in all weather conditions, young children in Year 1 and Year 2 have access to puddle suits, allowing them to enjoy and investigate the outdoors comfortably throughout the year. We have created spaces which allow creativity and exploration to thrive, including a dedicated outdoor classroom and natural play areas that encourage imaginative and active learning.

Forest School sessions help pupils develop problem-solving skills, independence, and confidence, while fostering a sense of responsibility and care for the environment. These experiences complement our curriculum and support the development of essential life skills.

At Sacred Heart, outdoor learning is not just an activity, it is an integral part of our vision to nurture happy, healthy and confident learners.





# Religious Education

Sacred Heart Primary School is a Catholic school rooted in Gospel values, yet we warmly welcome children and families from all faiths and backgrounds. Our aim is to foster respect, understanding, and a sense of belonging for every member of our school community.

From Year 1 to Year 7, pupils follow the Grow in Love Religious Education programme, which supports spiritual development and encourages children to live out values of kindness, compassion, and love. Through this programme, pupils learn about their faith while also developing an appreciation for diversity and inclusion.

We work closely with our parish to prepare pupils for the Sacraments of Reconciliation, First Holy Communion, and Confirmation, ensuring these important milestones are celebrated with care and support.



While Religious Education is an integral part of our curriculum, participation is not compulsory. We respect the beliefs of all families and can make appropriate accommodations for pupils who would prefer not take part in religious lessons.

At Sacred Heart, our approach to Religious Education is about more than teaching; it is about nurturing a community where every child feels valued and supported in their spiritual and personal growth.





# ASSESSMENT

Assessment is an essential part of teaching and learning at Sacred Heart Primary School. It serves a variety of purposes, including:

- Determining each child's level of achievement.
- Helping teachers plan effectively to meet individual needs.
- Identifying strengths and areas for development.

## Assessment in the Foundation Stage (Years 1 & 2)

In the early years, observations are the main assessment tool.

These are -

- Carried out discreetly during everyday activities.
- Used to inform future teaching and learning.
- Helpful in identifying children's strengths and areas for development.
- Focused on assessing the whole child, including social and emotional development.

## Formal Assessment (Years 3–7)

From Year 3 onwards, pupils complete a range of formal assessments:

- CAT Test (Cognitive Ability Test) – Term 1
- PTE (Progress Test in English) – Term 3
- PTM (Progress Test in Mathematics) – Term 3
- Half-Termly Assessments in core subjects

All of these assessments (with the exception of the half-termly assessments) are computer-based and used by staff for diagnostic purposes, enabling us to tailor teaching and learning to each child's needs.

At Sacred Heart, assessment is not just about measuring progress, it is about understanding each child as an individual and ensuring they receive the support and challenge they need to thrive.





# POSITIVE BEHAVIOUR

At Sacred Heart Primary School, we are proud of the excellent behaviour and good manners our pupils demonstrate every day. We believe that good behaviour creates a secure, happy learning environment where every child can reach their full potential.

Our approach is positive and proactive. We focus on encouraging and rewarding good behaviour through systems such as:

- Class Dojo/J2e Stars
- Canteen Awards
- Golden Time
- Teacher Awards
- Class Attendance Cup
- Principal's Award



These rewards celebrate effort, kindness, and achievement, helping children understand that their actions matter.

Working together is really important at our school. If you ever have a concern, we operate an Open Door Policy and invite parents to contact us immediately. Appointments can be arranged, via the school office, to speak with a member of staff. We know that behaviour at school and home are closely linked, so good communication between home and school is key.

We take inappropriate behaviour seriously and work closely with parents, children, and staff to resolve issues quickly and fairly. Each class has a Class Charter, and pupils are encouraged to take responsibility for their own actions. Our stepped approach to behaviour in managing behaviour is clear and consistent across all key stages, helping children understand expectations and consequences.

As a Rights Respecting School, we encourage pupils to act in a caring and respectful way towards each other and to use their voice when something is wrong. Every child has the right to be heard and listened to. At Sacred Heart, positive behaviour is about more than rules. It is about creating a community where respect, kindness, and responsibility are at the heart of everything we do.

# PASTORAL CARE

Sacred Heart Primary School is committed to creating an environment that is:

- Happy
- Secure
- Nurturing
- Respectful

We always promote positive relationships between pupils, parents, and staff, because we believe that strong partnerships are key to every child's success and well-being.

Our aim is to develop the whole child, growing their talents and abilities while providing opportunities to contribute to the wider school community. One of our primary concerns is meeting the social and emotional needs of all children in our care. We understand that life can bring challenges, and during these times, our staff is here to support both your child and your family.

Confidentiality is paramount, and when needed, we work closely with local agencies to provide additional help.

## Pastoral Care Panel and Safeguarding Team

We have a dedicated Pastoral Care Panel, which includes:

- Principal
- Designated Safeguarding Teacher
- SENCO
- Pastoral Care Coordinator
- School Counsellor

This team meets regularly to discuss pathways of support for pupils and to identify the most appropriate interventions. Our school counsellor also has a designated space to provide confidential support when required.





# PASTORAL CARE

Alongside our Pastoral Panel, we have our Pastoral Care Team of volunteers who work hard to create a caring and supportive atmosphere through initiatives such as:

- Toast Time (providing a hot snack three days a week for free to all pupils)
- Winter Coat Appeal
- Christmas Jumper Appeal
- First Holy Communion Pop Up Shop

These efforts reflect our commitment to ensuring that every child feels valued and cared for.

At Sacred Heart, pastoral care is at the heart of everything we do. We want every child to feel safe, supported, and happy because when children feel secure, they thrive.





# OUR SCHOOL COUNSELLOR



At Sacred Heart Primary School, supporting emotional well-being is a key part of our pastoral care in an effort to ensure that every child thrives in our care. We are so blessed and privileged to have our very own school counsellor on site.

Our school counsellor, Mrs Rachel McMonagle, provides this vital support twice a week. Rachel works from her own designated space within the school, set away from the main thoroughfare, creating a calm and private environment where pupils feel safe and at ease.

Rachel uses a variety of approaches tailored to each child's needs, including:

- Practical activities
- Art and creative expression
- Play-based therapy
- Sand therapy

Sessions typically last for six weeks, but can be extended depending on the child's needs. Rachel also supports parents and staff, offering guidance and leading workshops to promote emotional well-being across the school community.

No matter how big or small the problem, Rachel is here to listen and help. Her work ensures that pupils feel supported and empowered, which in turn allows them to engage fully with learning and flourish both academically and socially.



# SPECIAL EDUCATIONAL NEEDS

At Sacred Heart Primary School, we pride ourselves on supporting every pupil to the best of our ability. We recognise that all children are unique and will flourish at their own pace. We value these individual differences and are committed to helping every child reach their full potential during their time with us.

Our Special Educational Needs Team works tirelessly to ensure that the needs of all pupils are met through a caring, inclusive approach.

## HOW DO WE SUPPORT CHILDREN?

We achieve this by:

- Monitoring progress through observations and formal/informal assessments.
- Screening for Literacy and Numeracy difficulties from Year 3 onwards to identify if extra support is needed.
- Developing individual or small group programmes tailored to specific needs.
- Providing additional support through Literacy/numeracy Intervention and targeted focus groups.
- Creating Individual Education Plans for pupils which are reviewed and evidenced throughout the year.
- Working closely with teachers, parents, and external professionals to plan and deliver appropriate support.
- Offering access to our Sensory Room and Sensory Circuit Room for pupils who benefit from sensory regulation.
- Ensuring ongoing professional development for all staff to meet the diverse needs of our pupils.
- School provides access to a Speech and Language therapist on site.
- School provides access to a school counsellor on site.

## THE SEN TEAM

Our SEN provision is led by the Principal and coordinated by two experienced SENCOs. Together, they form the SEN Team, working collaboratively with teachers, classroom assistants, parents/guardians and external agencies to provide the best possible support.

# SPECIAL EDUCATIONAL NEEDS

## INCLUSIVITY AT SACRED HEART

We welcome everyone and pride ourselves on being an inclusive school. Our facilities include:

- Ramp access to the school building
- Internal stair lifts
- A specialised Hygiene Room with hoist and changing facilities
- A small Sensory Room and a larger Sensory Circuit Room

These resources ensure that children with physical, sensory, or medical needs can access all areas of school life.

At Sacred Heart, our goal is simple: to provide every child with the support they need to thrive academically, socially, and emotionally.







# HEALTH & WELL BEING

We believe that children learn best when they feel healthy, happy, and emotionally secure. Now more than ever, it is vitally important for children to understand how to look after both their physical health and their mental well-being. We promote this through a wide range of initiatives and daily practices.

## Healthy Bodies

- Daily Mile Walk – encouraging regular physical activity
- Healthy Breaks – promoting nutritious snacks
- Balanced Canteen Meals – freshly prepared, well-balanced dinners available every day
- Active PE Lessons – engaging and inclusive physical education
- Outdoor Play – opportunities for movement and exploration
- Healthy Eating Week – raising awareness of good nutrition

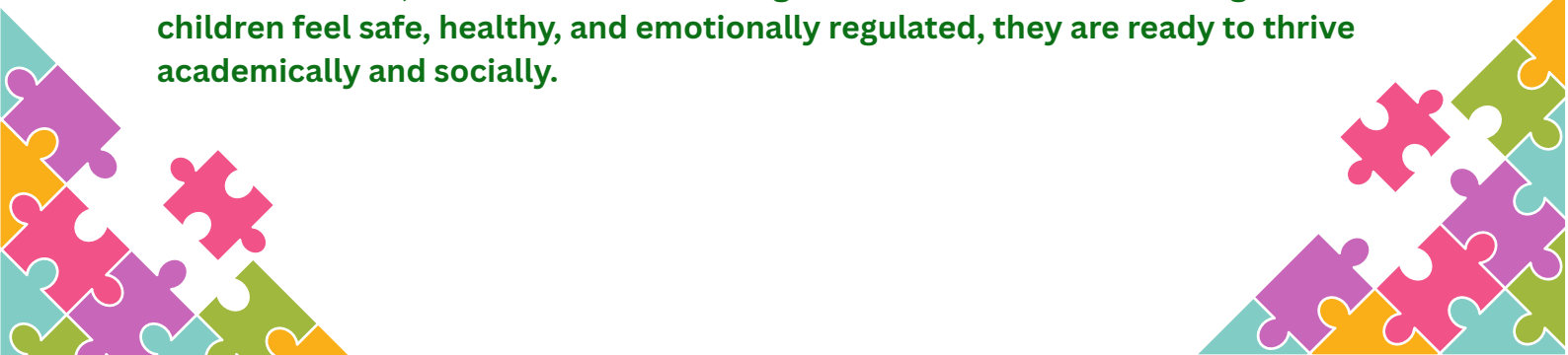
## Healthy Minds

- Circle Time and Meditation – creating calm, reflective spaces
- Focused PDMU Lessons – supporting personal development and mutual understanding
- Worry Monsters and Social Stories – helping children express feelings and manage emotions
- PATHS Programme (Years 1–7) – promoting positive thinking and emotional regulation
- Sunshine Programme – building resilience and confidence
- Brain Breaks – short activities to refresh and refocus
- Links to Local Charities – providing additional support when needed
- Access to Counselling and Therapies – including our dedicated school counsellor

## Beyond the Classroom

We also offer a wide range of extra-curricular activities that promote health and well-being, including Sport, Art, ICT, and mindfulness-based clubs.

At Sacred Heart, we know that well-being is the foundation for learning. When children feel safe, healthy, and emotionally regulated, they are ready to thrive academically and socially.





# SCHOOL UNIFORM



## Girls Uniform

- Navy Pinafore or navy skirt
- White shirt
- School sweatshirt and tie
- White socks or navy tights
- Black shoes or black trainers
- Blue gingham summer dress is optional

## Boys Uniform

- Navy trousers
- White shirt
- School sweatshirt and tie
- Black shoes or black trainers
- Navy shorts for the summer is optional



## Girls PE Uniform

- Plain white t-shirt
- Navy shorts, leggings or jogging bottoms
- Trainers
- School crested PE hoodie is optional

## Boys PE Uniform

- Plain white t-shirt
- Navy shorts or jogging bottoms
- Trainers
- School crested PE hoodie is optional





# OUR SCHOOL DAY

8.00am - 8.45am  
Breakfast Club

8.15am - 8.45am  
AR/Mathletics ICT Club

9.00am  
School starts for all

10.30am  
Break Time Y1 - 4

10.55am  
Break Time Y5 - 7

12.00pm  
Lunch Y1 - 4

12.35pm  
Lunch Y5 - 7

2.30pm  
School ends for Y1-2

3.00pm  
School ends for Y3-7

3.00pm - 4.00pm  
After School Activities

We aim to provide a structured yet balanced day for all pupils, combining high-quality learning with opportunities for play, social interaction, and well-being.

This structure ensures that children have time for learning, physical activity, and social development throughout the day.

## Lunch Time Options

At Sacred Heart Primary School, children can choose between bringing a packed lunch or enjoying a nutritious canteen dinner each day.

### Packed Lunch

- Please ensure all personal belongings, including water bottles, are clearly labelled with your child's name.
- We encourage healthy choices in line with our Healthy Eating Policy.

### Canteen Dinner

- Canteen meals are nutritional and well-balanced, freshly prepared each day.
- Payment should be made in advance using our secure online system: ParentPay.
- If your child has any allergies or dietary requirements, please inform the school as soon as possible.

### Free School Meals

To check eligibility and apply for Free School Meals, please visit the Education Authority Website at – [www.eani.org.uk](http://www.eani.org.uk)

# BEFORE & AFTER SCHOOL PROVISION

We understand the importance of providing flexible, supportive options for families while offering enriching experiences for pupils beyond the classroom. Our range of clubs ensures that children are cared for in a safe, fun, and stimulating environment.

## Breakfast Club (8:00 am onwards)

Our Breakfast Club opens at 8:00 am each morning, giving pupils a healthy and nutritious start to the day. It is a great opportunity for children to enjoy breakfast, socialise with friends and prepare for learning in a calm and positive atmosphere.

## ICT Club – AR and Mathletics (from 8:15 am)

From 8:15 am, pupils can access our ICT suite to work on Accelerated Reader (AR) or Mathletics. This club helps children develop literacy and numeracy skills in an engaging, technology-rich environment.

## 2:30–3:00 pm Club (Years 1 & 2)

For our younger pupils in Years 1 and 2, we provide a supervised club from 2:30 pm to 3:00 pm. This ensures that children are cared for until older siblings finish school, offering fun activities in a safe and nurturing setting. There is a small cost for this service.

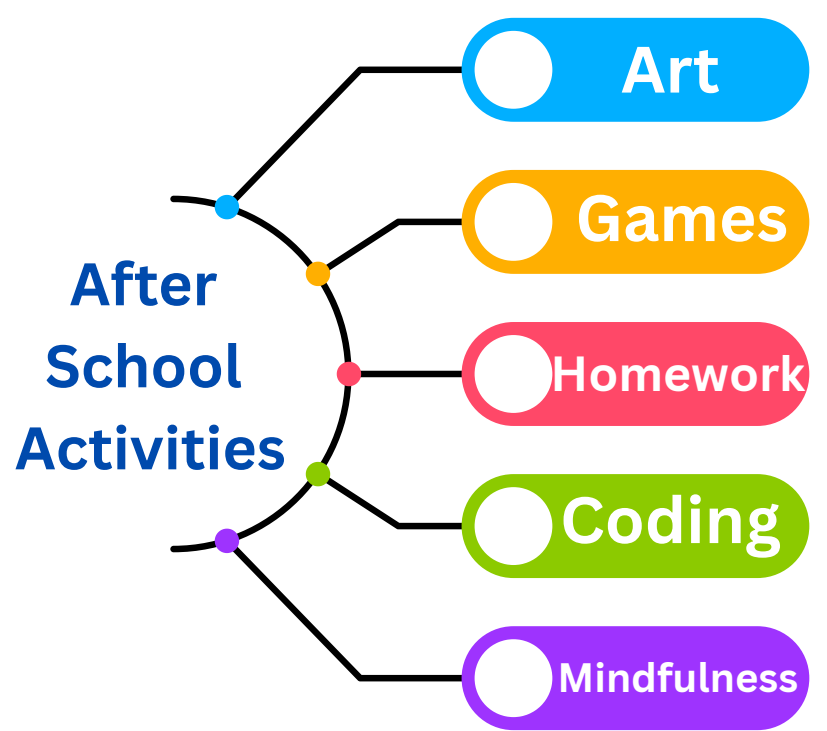
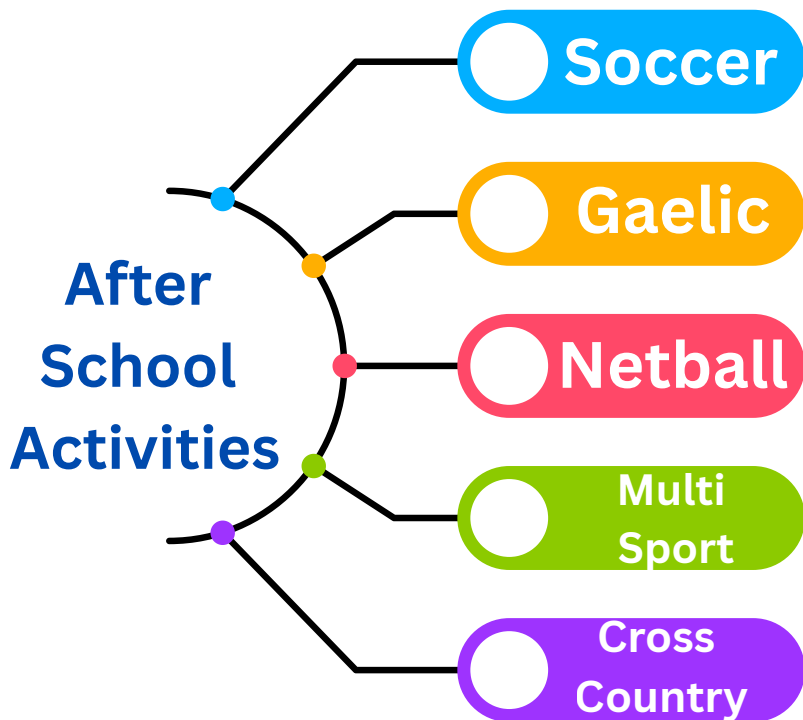
## Kidz Club (3:00–4:15 pm)

Our Kidz Club runs daily from 3:00 pm to 4:15 pm, providing wraparound care for families who need extra time after school. Pupils enjoy a variety of activities, including games, crafts, and outdoor play, all in a relaxed and friendly environment. At Sacred Heart, these clubs are designed to support families while giving children opportunities to learn, play, and grow outside the classroom.





# EXTRA CURRICULAR ACTIVITIES





# OUR ACHIEVEMENTS

We are proud of the many successes our pupils and school community achieve each year. These accomplishments reflect not only talent and hard work but also the strong sense of teamwork and support that defines our school.

## Sporting Success

Our boys' and girls' teams consistently excel in Gaelic football and soccer, achieving notable victories in local and regional competitions. Sport is an important part of school life, and we celebrate the dedication and sportsmanship of all our players. More recently, we have had success with our hurling team also!

## Music and the Arts

Our school choir participates in a wide range of events and recently celebrated success at the Feis Dhoire Cholmcille, winning awards for their outstanding performance. These achievements highlight the creativity and commitment of our pupils and staff.

## Other Awards and recent Recognition

- Scoil Spreagtha Award 2025 – recognising excellence in education and innovation for the promotion of the Irish Language
- Eco-Schools Green Flag Award 2025 – demonstrating our commitment to sustainability and environmental responsibility
- Pastoral Care Leader of the Year Award 2024

## Celebrating Success

At Sacred Heart, achievement is not just about trophies and medals, it is about recognising effort and progress. Every week, we celebrate pupils' achievements during assembly, where awards for attendance, behaviour, and special accomplishments are presented. We want every child to feel valued and motivated.

## Community and Support

Our amazing PTA plays a vital role in supporting school initiatives, fundraising, and creating memorable experiences for our pupils. Their dedication helps us provide the very best opportunities for every child. We are very proud of all that they do for our school community.





# OUR PUPIL VOICE

## Student Council

At Sacred Heart Primary School, we believe that every child's voice matters. Our School Council gives pupils the opportunity to share their ideas, express opinions, and play an active role in shaping school life.

The School Council works closely with the Principal and staff to help move the school forward in a positive direction. Members meet regularly to discuss issues that matter to pupils, suggest improvements, and contribute to decision-making that benefits the whole school community.

### What Do They Do?

- Represent pupil voice – ensuring every class has a say in school decisions.
- Fundraise for pupil-identified needs – organising events and initiatives to support projects that matter most to children.
- Work with the PTA – collaborating on fundraising activities and school improvement projects.
- Promote positive change – helping to create a happy, inclusive, and forward-thinking school environment.

Being part of the School Council helps pupils develop leadership, teamwork, and communication skills while learning the importance of responsibility and active citizenship.

At Sacred Heart, the School Council is more than a group; it is a platform for pupils to make a real difference.



*Together,  
We make a  
Difference*



# OUR PUPIL VOICE

## ECO Council



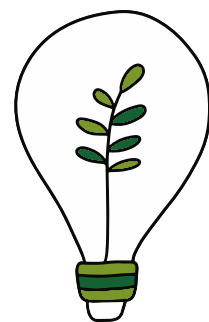
At Sacred Heart Primary School, we are passionate about caring for our environment and teaching pupils the importance of sustainability. Our Eco Council plays a key role in leading this mission.

The Eco Council is made up of enthusiastic pupil representatives who work together to make our school greener and more eco-friendly. They meet regularly to discuss ideas, set goals, and plan initiatives that promote environmental awareness across the school.



### What Do They Do?

- Lead eco-friendly projects – such as recycling schemes, energy-saving campaigns, and litter reduction.
- Promote sustainability – encouraging pupils and staff to make environmentally responsible choices.
- Work towards awards – including maintaining our Eco-Schools Green Flag status.
- Collaborate with the Principal and PTA – to fundraise and implement eco initiatives identified by pupils.
- Raise awareness – through assemblies, posters, and classroom activities.



Being part of the Eco Council helps pupils develop leadership skills, teamwork, and a sense of responsibility for the world around them. Together, they ensure that Sacred Heart is not only a place of learning but also a community that cares for the planet.







# Staff and Board of Governors

Our staff are the heart of our school community. Their dedication, professionalism and care ensure that every child feels valued and supported.

## Senior Leadership Team

Our Senior Leadership Team provides vision and direction for the school. They work closely with staff, pupils and parents to ensure high standards of teaching and learning, and to maintain a safe, nurturing environment. The team is responsible for strategic planning, curriculum development, and fostering a positive school ethos.

## Teaching Staff

Our teachers are not only highly qualified and experienced but they are an exceptional team who work together with passion and purpose. They inspire a lifelong love of learning, nurture creativity, and create engaging lessons that help every child flourish. Their commitment goes far beyond the classroom; they consistently exceed expectations to ensure every pupil feels valued, supported, and empowered to reach their full potential. We are proud to have such a dedicated and caring team at the heart of our school.

## Classroom Assistants

Our assistants play an invaluable role in the life of our school. Working hand in hand with teachers, they provide tailored support to meet the unique needs of every pupil. Their dedication helps create an inclusive, nurturing environment where all children feel empowered to learn and succeed. We are proud to have an exceptional team of assistants whose commitment and care truly make a difference every day.

## Support and Administrative Staff

Our administrative team works diligently to keep the school running efficiently, managing day-to-day operations with professionalism and care. Meanwhile, our caretaking and catering teams ensure that the school environment is safe, clean, and welcoming, and that pupils and visitors enjoy a warm, nurturing atmosphere.

A full complement of staff can be viewed on our school website:  
[www.sacredheartps.com](http://www.sacredheartps.com)





# Staff and Board of Governors

## The Board of Governors

Our Governing Body is a dynamic and dedicated team of individuals who bring a wealth of diverse backgrounds and expertise to our school community. United by a shared passion for education, they work enthusiastically and in close partnership with staff to ensure that both pupils and staff are supported in reaching their full potential. Each Governor contributes unique perspectives and skills, yet all are deeply committed to enhancing the educational experiences and outcomes for every child in our school. Their collaborative approach and unwavering dedication play a vital role in driving our school forward and fostering an environment where excellence and wellbeing can thrive.

Our Board of Governors continues to play a pivotal role in shaping the strategic direction and success of the school. With a strong commitment to excellence, Governors provide effective oversight and challenge, ensuring accountability across all areas of school life. They are responsible for appointing the Principal and staff, delegating the daily management of the school while maintaining close scrutiny of recruitment, financial planning, and resource allocation.

Governors monitor the full breadth of the curriculum, including educational outcomes, the integration of faith, safeguarding practices, and the upkeep of our school environment.

Through their diverse expertise and shared dedication, the Governing Body ensures that our school remains focused on continuous improvement, enabling every child and member of staff to thrive. Their leadership is instrumental in helping us to be the very best we can be.

A full complement of Governors can be viewed on our school website: [www.sacredheartps.com](http://www.sacredheartps.com).





# PHOTO GALLERY



